

highly weather-protected - potential theme?

- high and stiff collars
- sometimes connects to hats
- or insert a button to be more windproof

# PORTFOLIO

SS 2022

ゴセイブツ





# SAMI

PHOTOSHOP



ILLUSTRATOR



AFTER EFFECTS

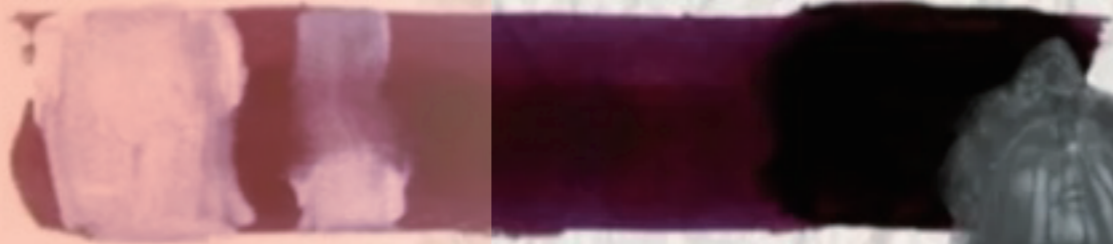


INDESIGN

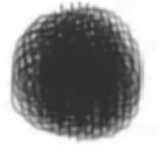


CINEMA 4D





BLU SCURO



NERO



VIOLA



ROSSO SANGUE

1、



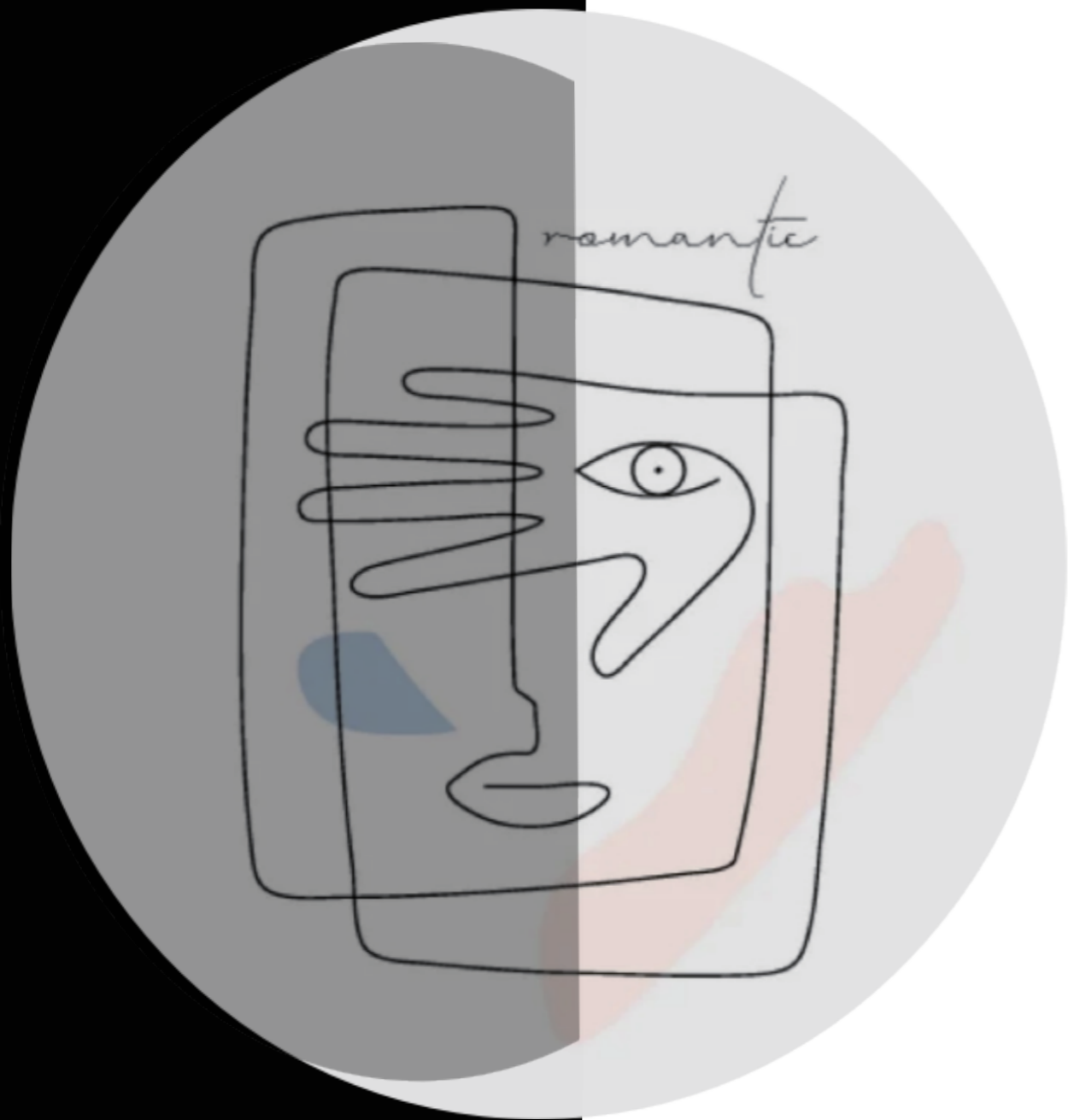
2、

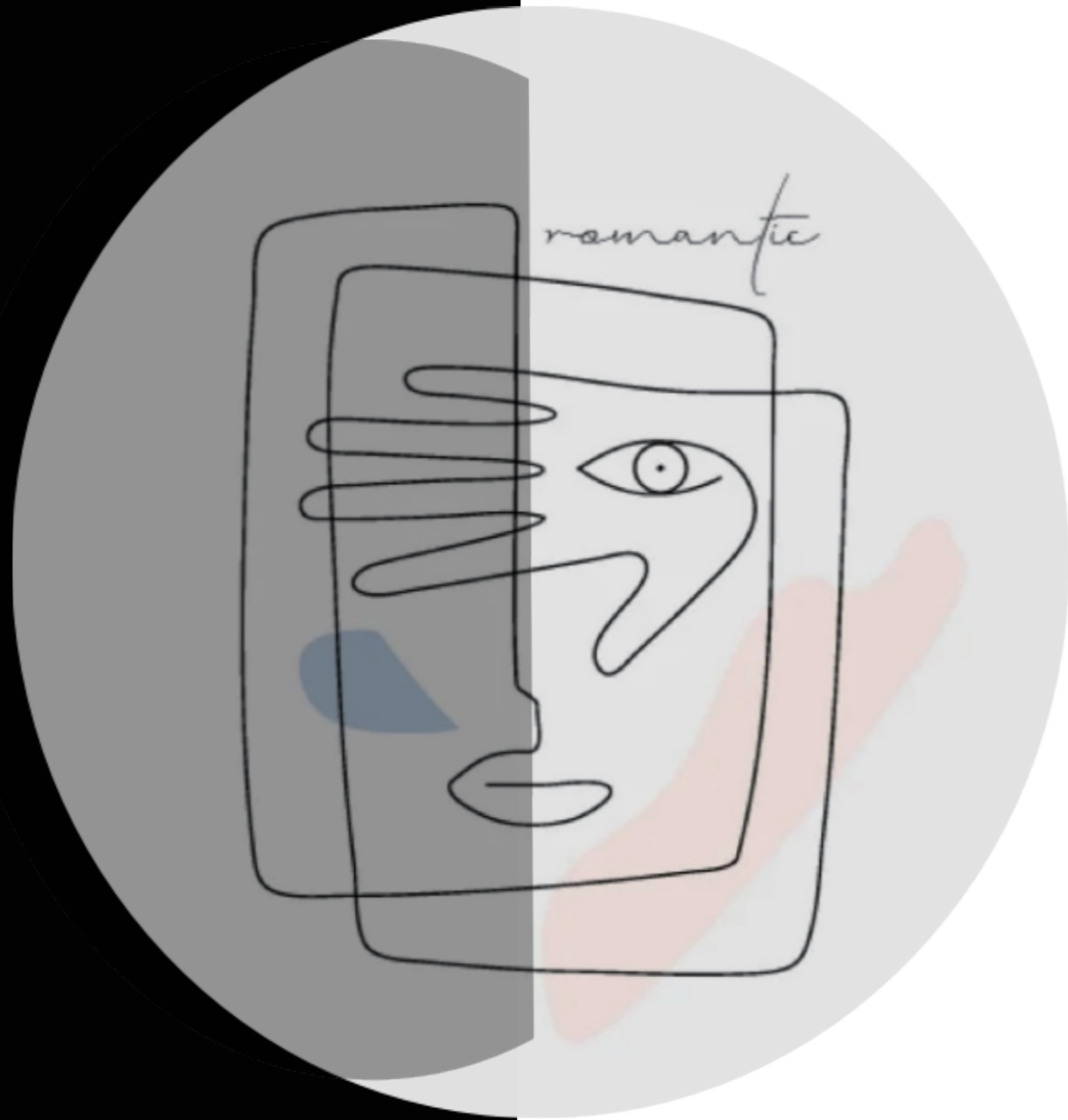
全体から見て、多くの抽象的な物を、ねじって形にして、水と火は同時に人間の両面性を映し出します。

正面から見て、線が滑らかで、太さも細さもあって、自分でデザインしたブランドを追加します。

後は自分で撮ったものです。多くの人にとって、火は激しくぶつかります。しかし、私はいつも火と弱さを一緒に考えます。







L'Artisan Parfumeur L'Eau d'Ambre

revolutionary waterproofing method invented by Charles Macintosh in early 1800s.

construction techniques



modern Mackintosh raincoat



brand identity  
waterproof, handmade  
protection?  
weather? landscape?  
nature  
these ideas!

MACKINTOSH  
Made in Scotland  
CARE OF YOUR COAT  
Mackintosh has been hand-made from the best materials and will afford complete protection from the heaviest downpour. You get the best wear the following attention:  
Mackintosh is an easy fitting garment. Should not be drawn too tight. When not in use, it should be kept in a cool, dry place.

rubberised fabric  
waterproof



In 1824, the Scottish chemist Charles Macintosh discovered and patented a new technology for waterproof coats by combining rubber with cotton. It invented the first raincoat in the world. Since then, rubberised cotton, waterproof and craftsmanship have been its brand identities. During the World Wars, the waterproof trench coats for British army were made by Mackintosh.

MACKINTOSH

Mackintosh History

# Workers' uniforms



shirts with pockets

Due to urbanization and the World Wars in the 20th century, more women started working in factories and offices.

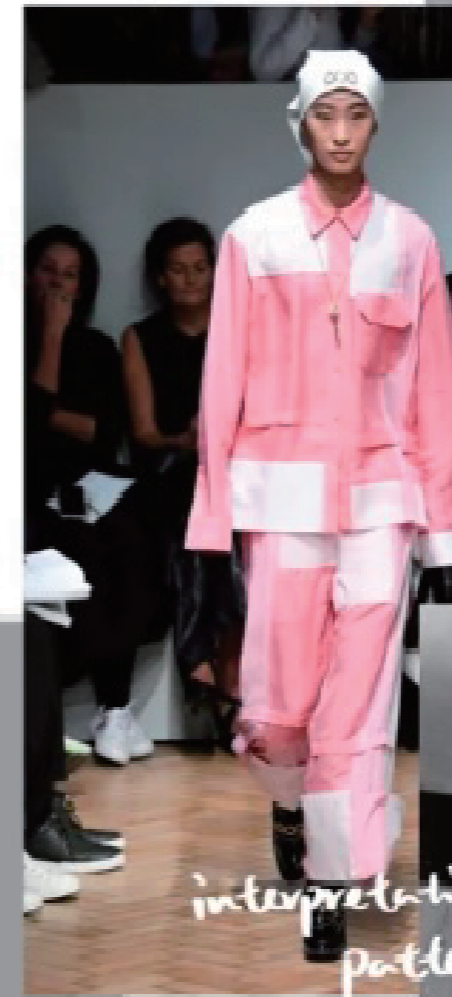
Pam chamber in wartime factory, 1942



asymmetric to look modern

SS 2019

I found that the shirts by JW Anderson and the historical uniforms share similar elements and style.



interpretation of patterns



female workers



connection with workwear



female secretary in 1899



Shirt developed from Galinbold

give the vintage workwear new life



gathered sleeve



minimal  
elegant  
comfortable  
sophisticated



same point collar

female office workers in 1980



In 20th century, shirts became more dynamic and comfortable. They were no longer to be hidden inside. They could represent social class and different jobs. The designs of collar, sleeves and lengths were unlimited.

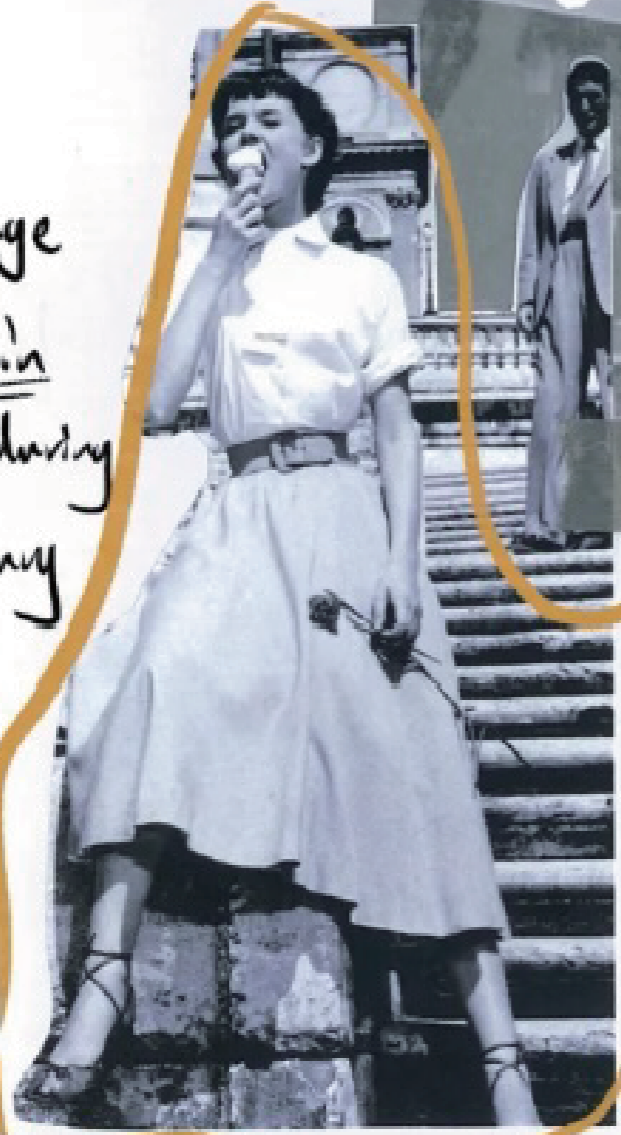


Emma Kelly

shirts to represent jobs

# Work wear

the change of roles in women during the century

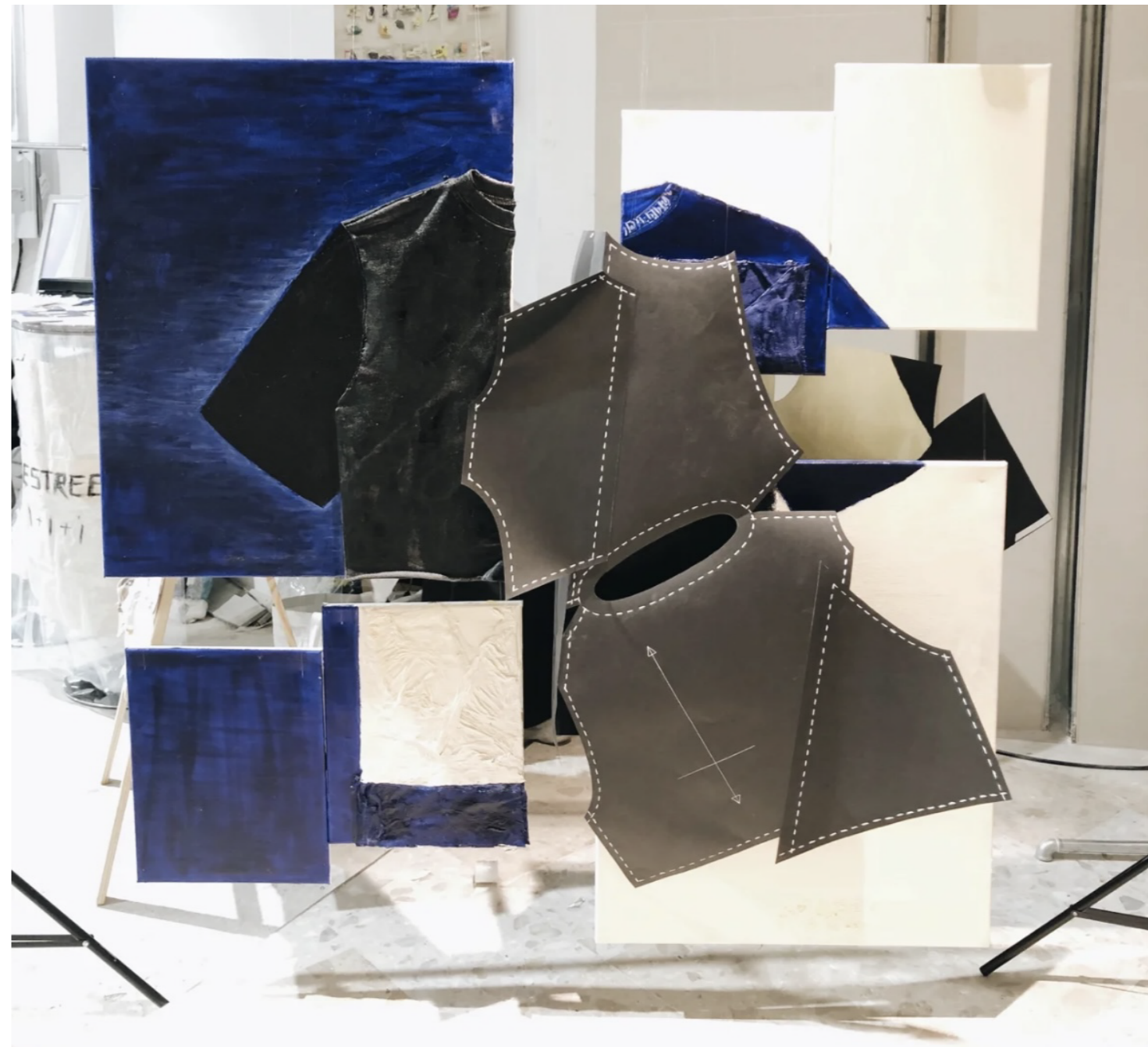


"white collar workers"

Women started to wear shirts and more comfortable dresses more often during the period.

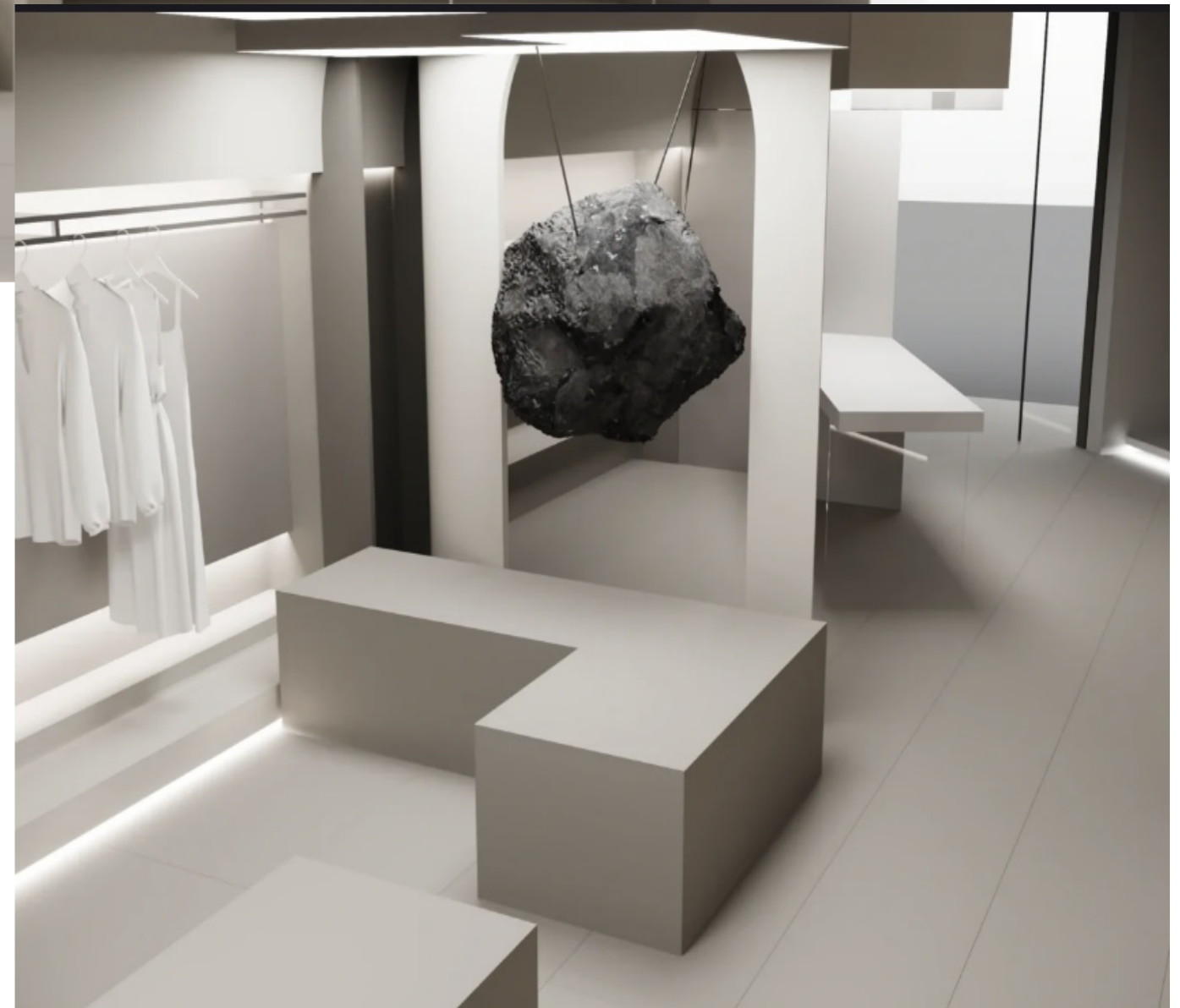


workers' uniforms  
20th Century



shop







white  
+


black

+

grey

→ pleated  
dress.

knitted

The image is a complex collage. On the left, there's a technical drawing of a garment pattern, possibly a dress or top, with dashed lines indicating seams and arrows showing directions. This is overlaid on a background of a mountain range with a winding road. On the right, there's a detailed bronze sculpture of a woman's head and shoulders, with her hand near her face. The overall composition is layered with various colors and textures, creating a sense of depth and artistic connection between fashion design and nature/art.

ご覧いただいた皆様、  
ありがとうございました