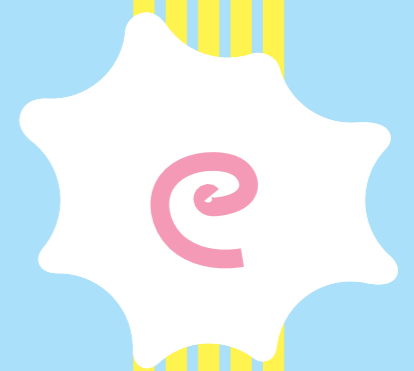
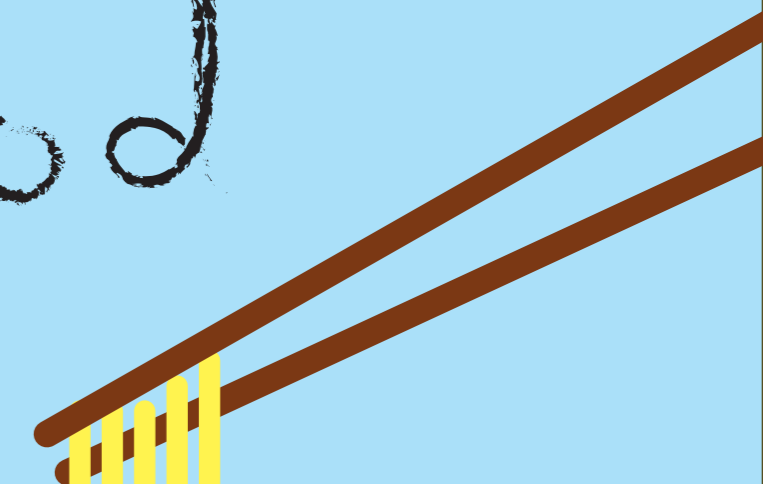




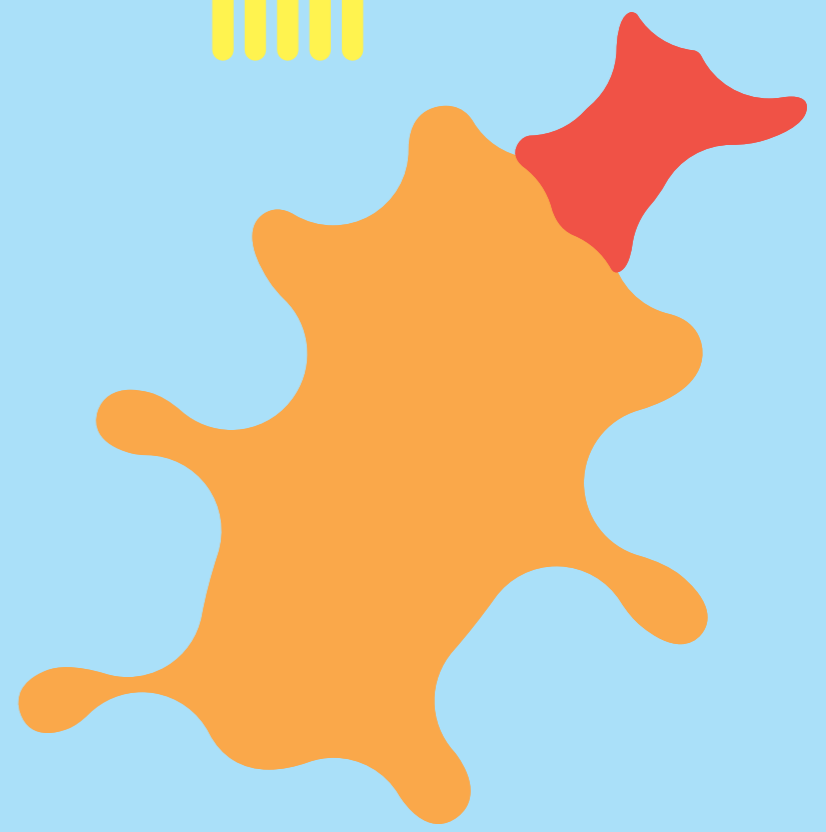
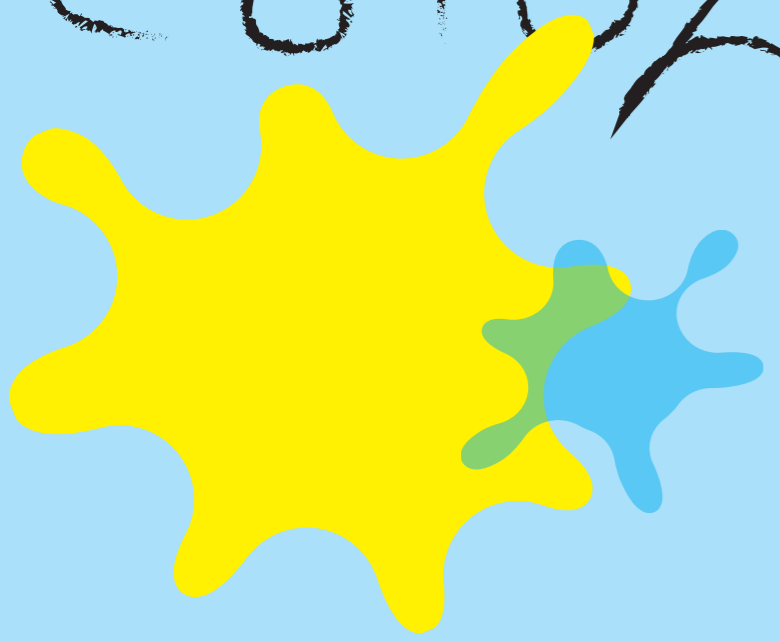
● ●
HAPPINESS

Food

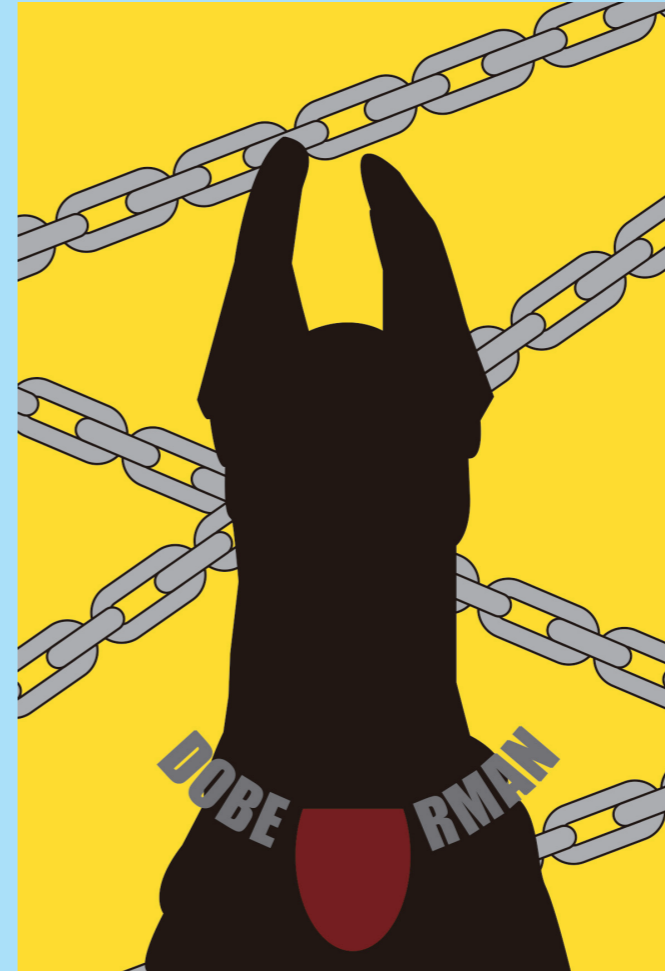
Spoons



Colors



Animal postcard

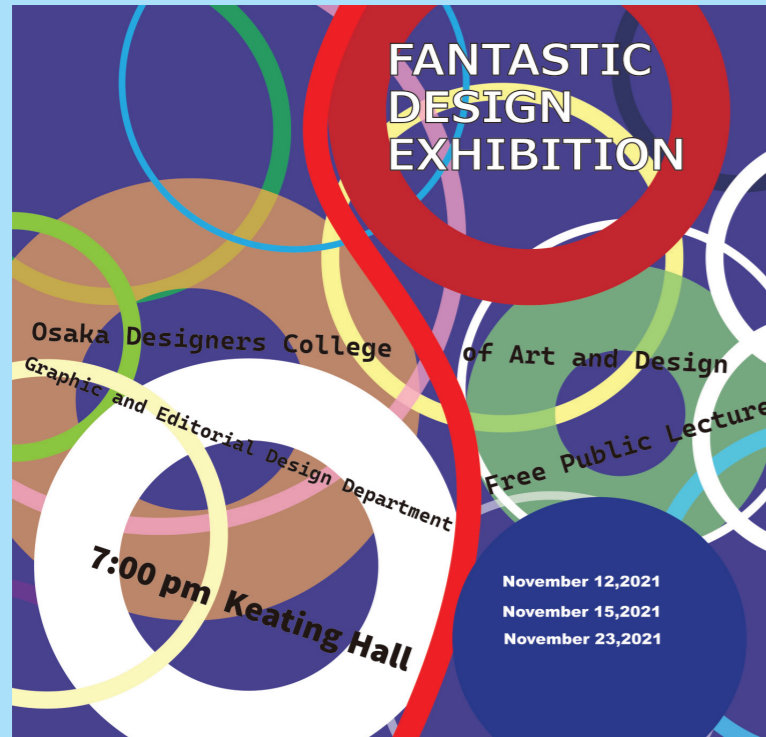


きと きと
なも ん
食べ られ

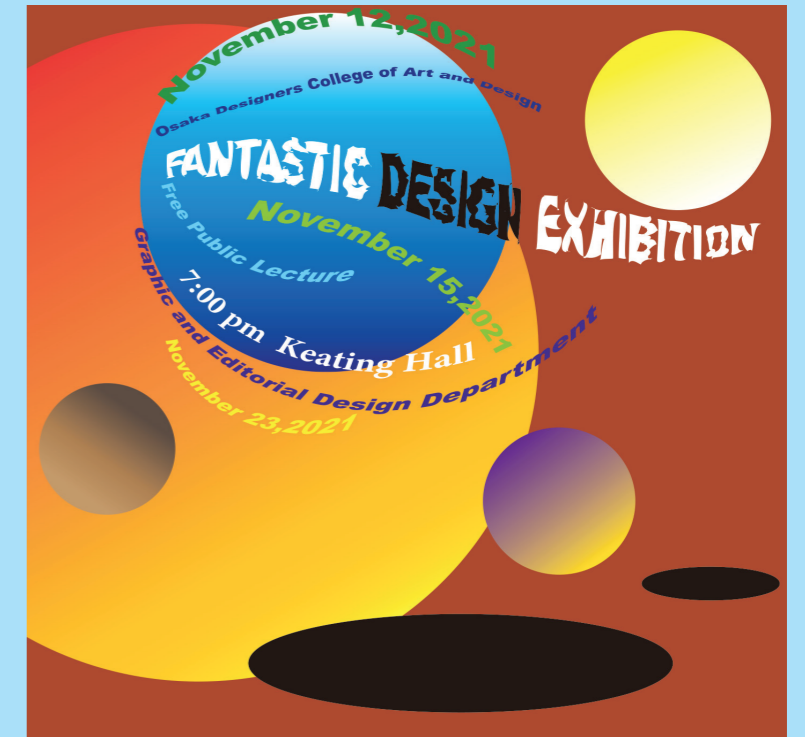
The text is arranged in three rows. The first row contains 'きと' and 'きと'. The second row contains 'なも' and 'ん', with a small fish icon to the right of 'ん'. The third row contains '食べ' and 'られ', with a small fish icon to the right of 'られ'. There are also two larger fish icons floating in the background between the second and third rows.

※きときと：富山弁で「新鮮」という意味。

Typo graphic



アメコミ風



惑星

